



25 Glebe Road  
Buxton



Estate Agents. Valuers. Auctioneers. Chartered Surveyors  
Part of the Bagshaws Partnership

25 Glebe Road  
Buxton  
Derbyshire, SK17 7PL



\*Bury and Hilton are delighted to offer for sale this deceptively spacious semi detached property in need of complete renovation to the market which may be of interest to investors.

\*Located in a popular residential area which is close to town and amenities.

\*Accommodation in brief comprising: Entrance hall, lounge, dining room and kitchen to the ground floor with cellar to lower ground floor. Two double bedrooms and family bathroom to the first floor

Offers Over  
£125,000

Buxton - 0129827524

[buxtonhomes@buryandhilton.co.uk](mailto:buxtonhomes@buryandhilton.co.uk)

#### Entrance Hallway

uPVC door to front. Radiator. Stairs to first floor.

#### Lounge

uPVC window to front. Radiator. Gas fire place.

#### Dining Room

uPVC window to rear. Original cast iron kitchen. Radiator.

#### Kitchen

Fitted with wall and base units with drawers and worksurface over incorporating sink with drainer. Wall mounted 'Worcester' gas combi boiler. Gas hob, electric oven. uPVC window to side, Upvc door leading onto rear garden. Door to cellar. Radiator. Tiled flooring.

#### Lower Ground Floor- Cellar

With power and lighting.

#### First Floor Landing

With doors too:  
Stairs off leading to second floor.

#### Bedroom

uPVC window to rear. Radiator

#### Bedroom

uPVC window to front. Radiator.

#### Bathroom

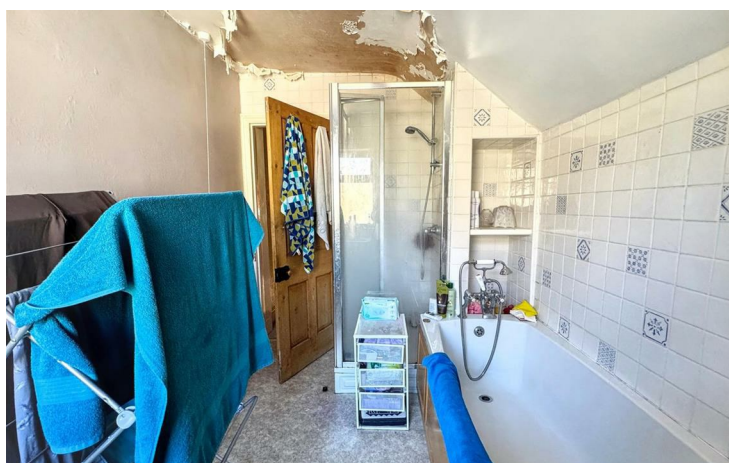
Fitted suite comprising: Paneled bath, shower cubical, wc and wash hand basin. Radiator.

#### Second Floor Landing

Velux style window. Eaves storage.

#### Loft Room

Velux style window to front and rear. Eaves storage.



Energy Efficiency Rating		
	Current	Potential
Very energy efficient - lower running costs		
(92 plus) A		
(81-91) B		
(69-80) C		77
(55-68) D		
(39-54) E	46	
(21-38) F		
(1-20) G		
Not energy efficient - higher running costs		
England & Wales		EU Directive 2002/91/EC

## Agents Notes

Bury & Hilton have made every reasonable effort to ensure these details offer an accurate and fair description of the property. The particulars are produced in good faith, for guidance only and do not constitute or form an offer or part of the contract for sale. Bury & Hilton and their employees are not authorised to give any warranties or representations in relation to the sale and give notice that all plans, measurements, distances, areas and any other details referred to are approximate and based on information available at the time of printing.



17 High Street, Buxton, Derbyshire, SK17 6ET

T: 0129827524

E: [buxtonhomes@buryandhilton.co.uk](mailto:buxtonhomes@buryandhilton.co.uk)

[www.buryandhilton.co.uk](http://www.buryandhilton.co.uk)

Part of the Bagshaws Partnership



#### Offices in:

Ashbourne 01335 342201  
Bakewell 01629 812777  
Buxton 01298 27524  
Leek 01538 383344  
Uttoxeter 01889 562811